

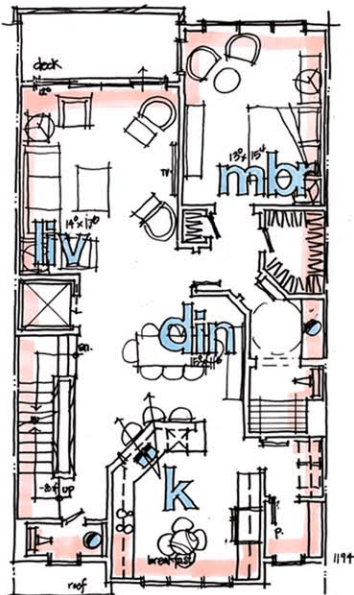
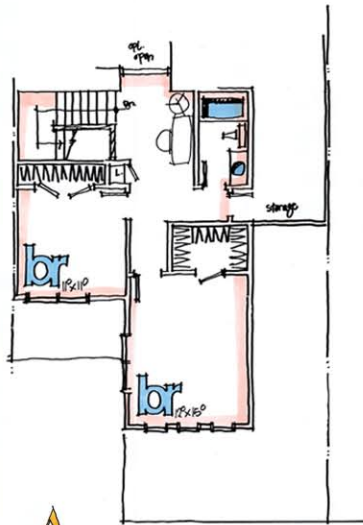
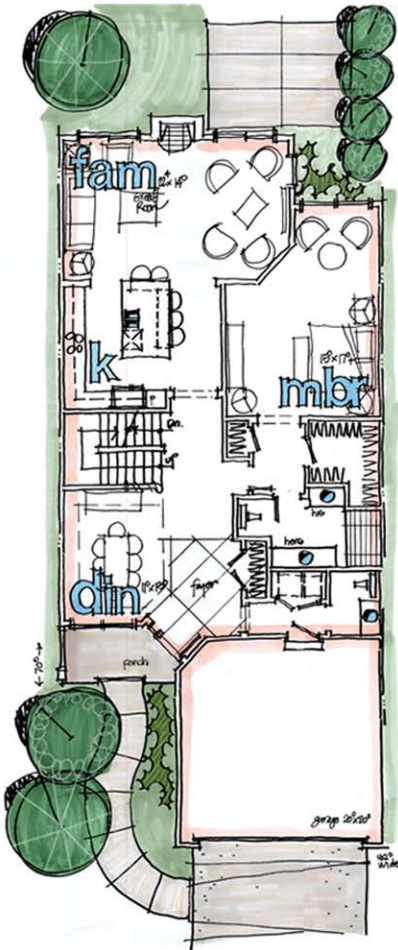
Elevator or Not?

Design File
November 2016

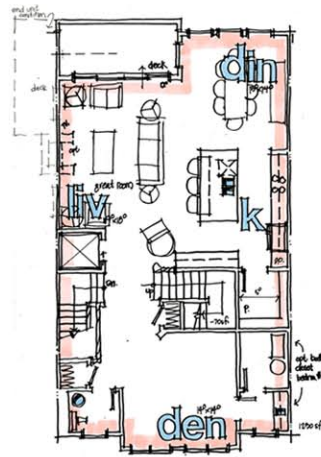
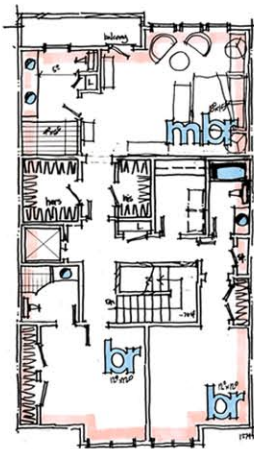
The need for high density empty-nester product leads to the first big question-- do you factor in an elevator in your plans or not?

If you do not include one, then the master bedroom has to be on the first floor. It can be done in 28'-32' wide (or wider) homes, but it is not easy and can lead to a heavy "garage look."

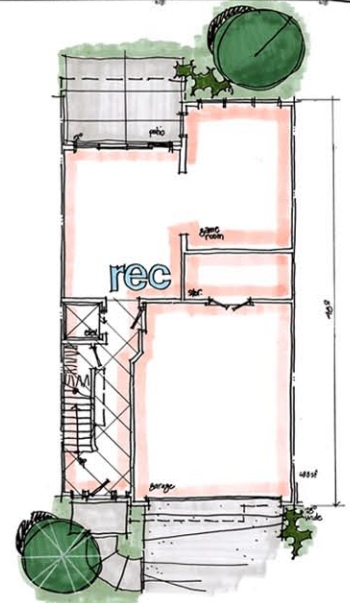
With an elevator, the master can move to the second or third level, and we can use a narrower footprint.



B



C



WE UPDATED OUR WEBSITE!
CHECK OUT OUR NEW LOOK AT
WWW.DEVEREAUXARCH.COM