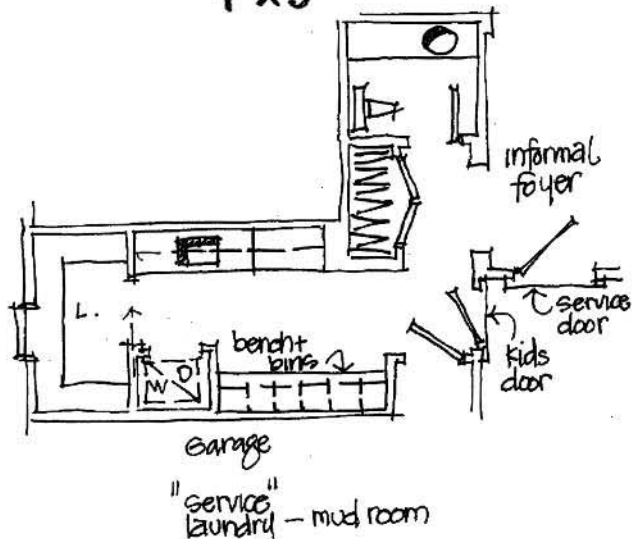
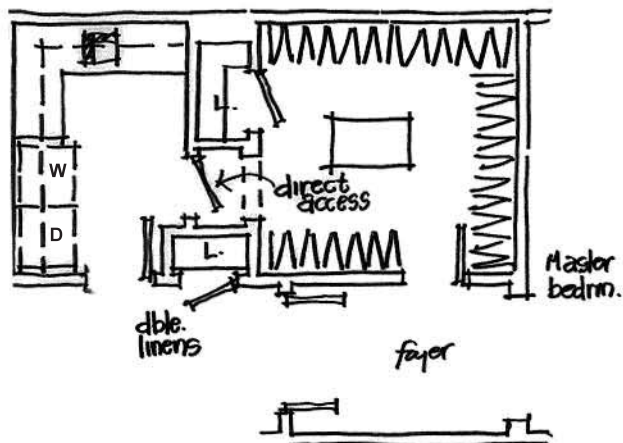
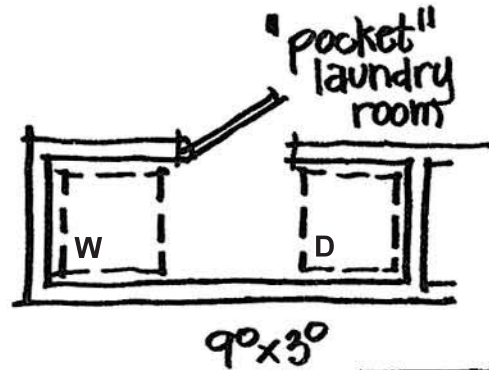
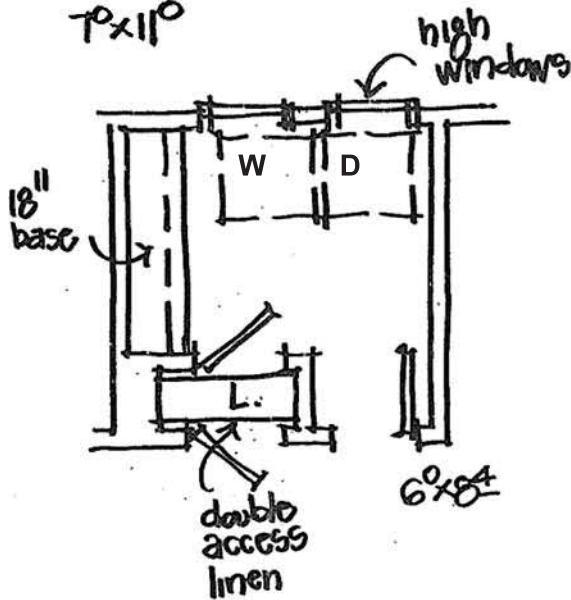
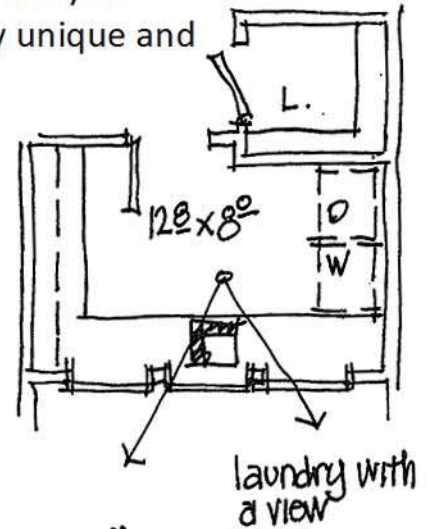
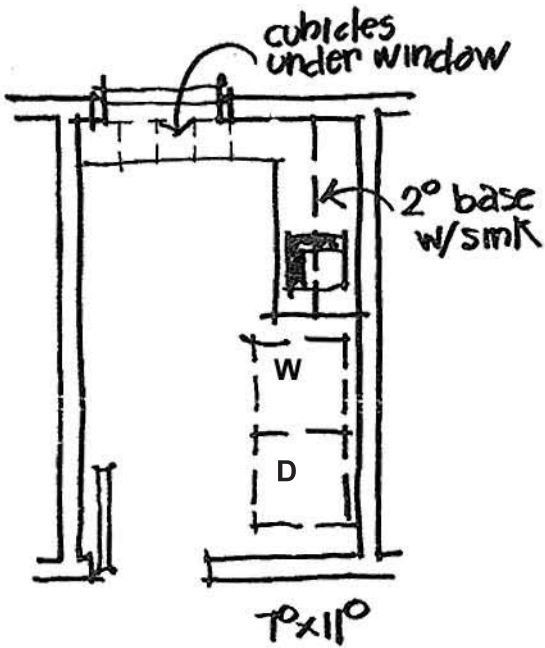


Devereaux & Associates, P.C.

ARCHITECTS AND PLANNERS

TIME TO AIR THE DIRTY LAUNDRY....

Laundry rooms are not in the basement or in closets in the hall – they are also not 5' x 5' rooms. Start with 7' x 11' and add workspace and storage, a double access linen closet, cubicles, double entry or whatever makes your laundry unique and more usable.



Design File
August 2016