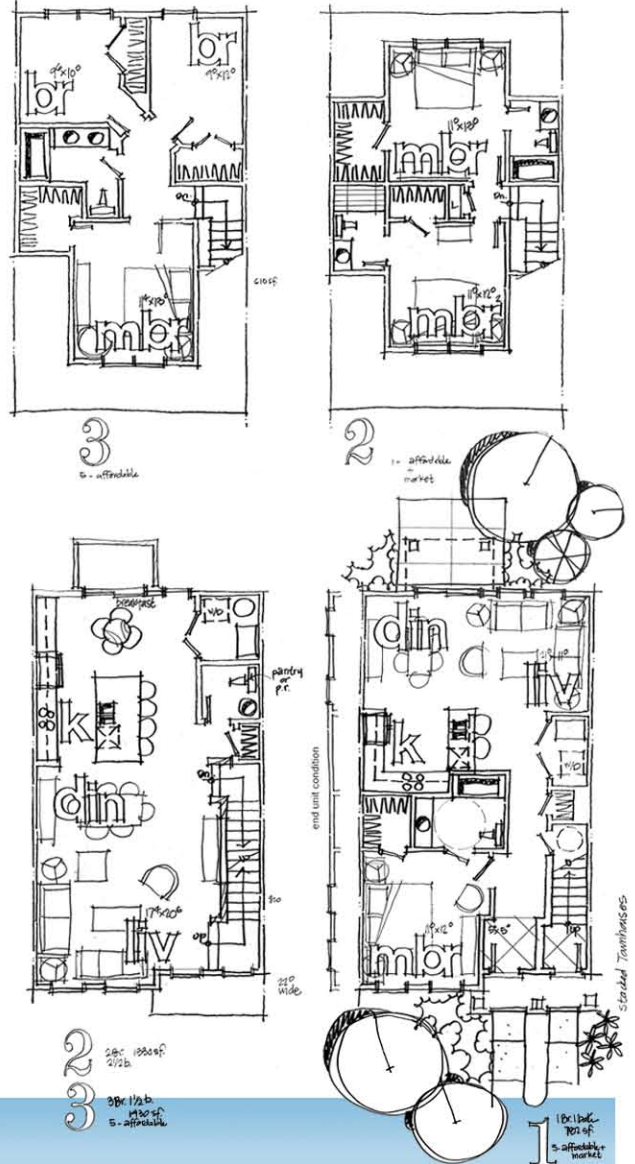


## AFFORDABLE HOUSING: Keep It Affordable



Most jurisdictions require an affordable housing and accessible (ADA) component in apartment or condo development. In New Jersey, it is known as COAH, ADU's in Virginia, and MPDU's in Maryland. This New Jersey project addresses this requirement with a combination of accessible 1st level one-bedroom units and the affordable two- or three-bedroom townhouse units above. High density simple construction helps to alleviate the financial burden.



Design File  
January 2016