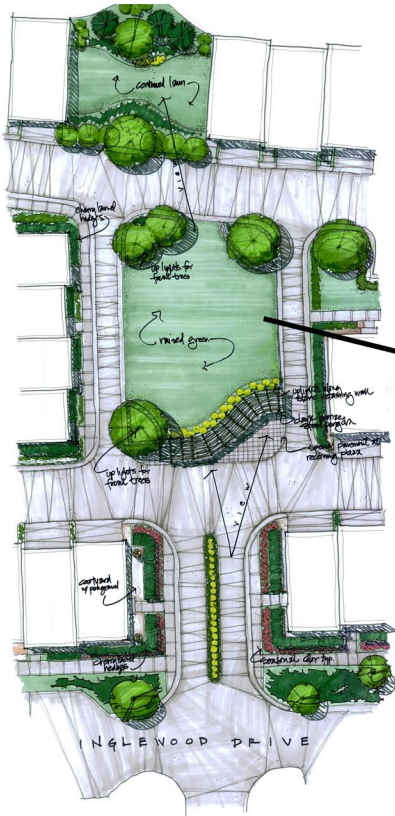
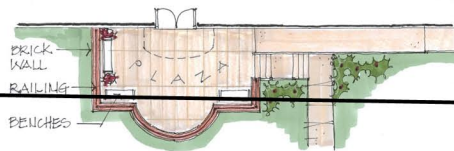
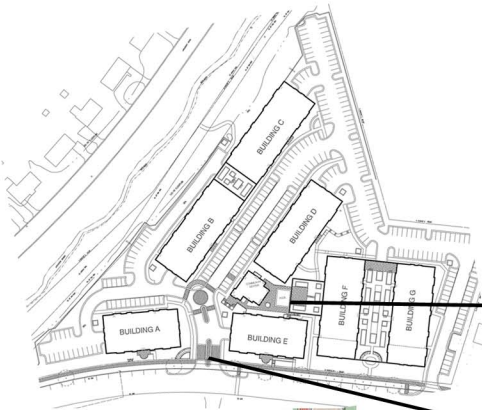


Approvals are in the Details

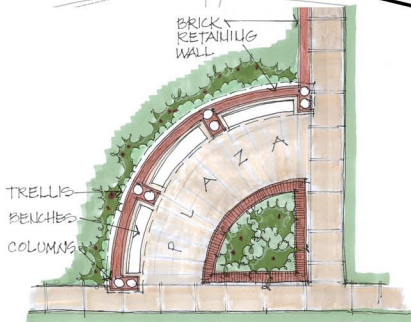
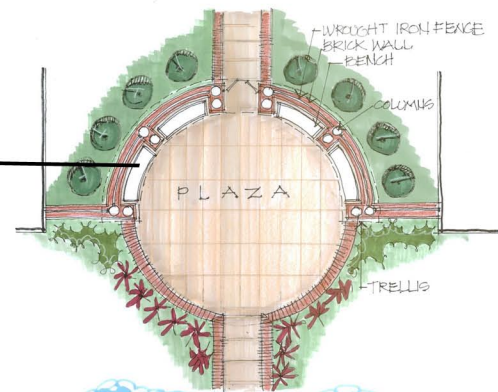


The Christopher Companies' "Stonefield"

Landplan details and site features often help sell communities to their prospective planning boards. Identifying open, green space as well as the inclusion of signage, benches, pergolas, water features, hardscape and softscape materials help define the common areas and their uses, and create a sense of purpose and place for the community.



JCE's "Layton Hall"



Building Entry Forecourt