

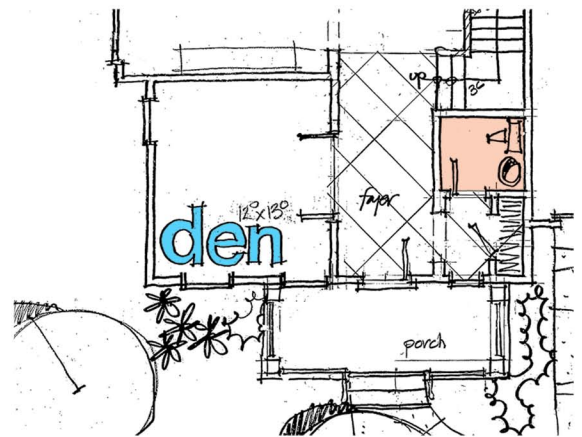
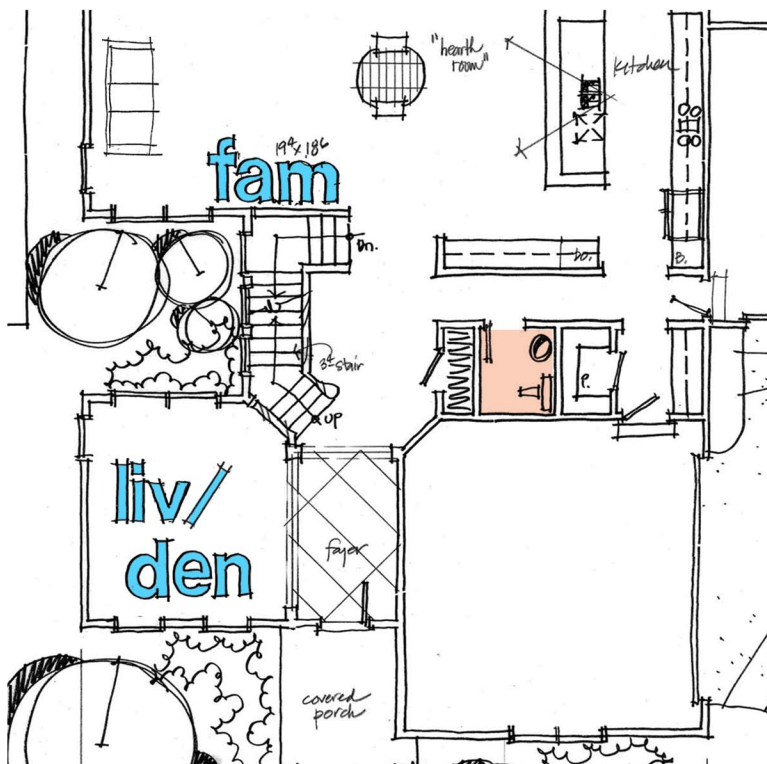
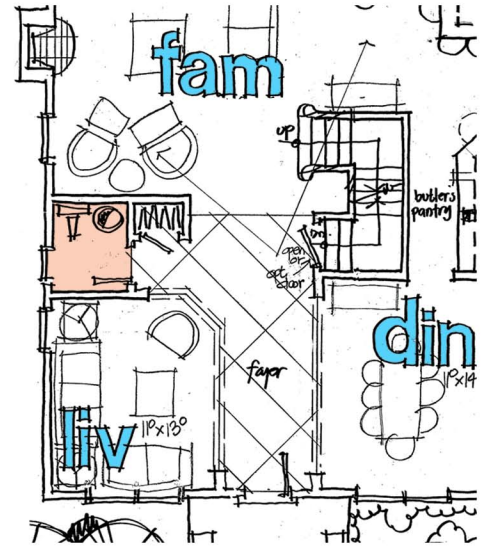
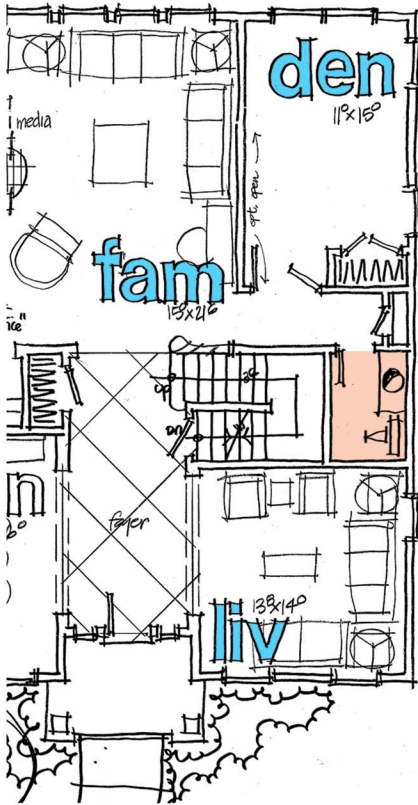
## POTTY TALK

### where should you place the powder room?

Proper powder room placement can be tricky - particularly keeping it away from sight lines while still maintaining an accessible location.

Some solutions are shown here - the powder room is within proximity of the living areas but not directly visible, and closer to the living or family room rather than the kitchen or dining.

And if it must be off the foyer, preferably you turn a corner to get there.



Design File  
February 2014